



Measles weekly Bulletin WHO/MoH Iraq
Surveillance summary and analysis of selected performance indicators for measles/rubella surveillance-Iraq
2010; first 10 weeks compared with the same period for 2009

Province	Total population	Suspect measles		Cases tested for measles		Total confirmed measles		Measles lab confirmed		Measles incidence/million		Total rubella cases	
		2009	2010	2009	2010	2009	2010	2009	2010	2009	2010	2009	2010
ANBAR	1483280	135	1	11	0	22	0	6	0	14.8	0.0	0	0
BABYLON	1625434	1292	7	370	7	377	0	326	0	231.9	0.0	27	1
BA-KARKH	2937300	1035	21	522	6	536	0	396	0	182.5	0.0	24	0
BA-RESAFA	3650383	1923	20	887	14	1233	5	747	0	337.8	1.4	23	1
BASRAH	2426607	232	1	143	2	116	0	111	0	47.8	0.0	6	0
DAHUK	942268	9	2	5	2	1	2	1	2	1.1	2.1	0	0
DIWANIYA	1025253	753	0	359	0	382	0	334	0	372.6	0.0	8	0
DIYALA	1486547	767	7	92	4	124	2	76	2	83.4	1.3	2	0
ERBIL	1482958	32	1	33	0	32	0	32	0	21.6	0.0	1	0
KERBALA	930509	446	3	270	6	263	0	247	0	282.6	0.0	16	0
KIRKUK	2864705	42	74	17	61	14	52	14	49	4.9	18.2	0	0
MISSAN	834977	382	6	149	0	102	0	81	0	122.2	0.0	4	0
MUTHANNA	583511	221	0	90	1	102	0	73	0	174.8	0.0	3	0
NAJAF	1206264	174	4	133	6	138	2	127	0	114.4	1.7	6	0
NINEWA	1027800	259	57	215	47	182	44	167	32	177.1	42.8	12	0
SALAHADIN	1254303	52	3	15	1	12	1	11	1	9.6	0.8	0	0
SULAYMANIA	1547072	59	2	65	4	53	3	50	3	34.3	1.9	2	0
THI-QAR	1640193	275	8	193	4	163	0	145	0	99.4	0.0	10	0
WASSIT	995296	2102	12	244	2	365	1	195	0	366.7	1.0	13	0
Iraq	29944660	10190	229	3813	167	4217	112	5148	89	140.8	3.7	157	2

weak reporting 2-4 cases in 5 DoHs

Serious problems in measles reporting in 5 DoHs

Cumulative measles/rubella case finding report up to week 10 ending 14 March 2010

Province	Total population	Measles case finding report							Rubella case finding report			
		total suspect measles cases	No. of specimen tested for measles	MEASLAB confirmed	Count of MEASEPI linked	Count of MEASCLIN diagnosed	total confirmed measles	Count of discarded measles	count of Rubella tested	Rubella Lab confirmed	rubella EPI linked	total discarded rubella
ANBAR	1483280	0	0	0	0	0	0	0	0	0	0	0
BABYLON	1625434	12	8	0	0	0	0	12	8	1	0	7
BA-KARKH	2937300	6	6	0	0	0	0	6	6	0	0	6
BA-RESAFA	3650383	24	15	0	0	5	5	19	15	1	0	14
BASRAH	2426607	6	4	0	0	0	0	6	4	0	0	4
DAHUK	942268	2	2	2	0	0	2	0	2	0	0	2
DIWANIYA	1025253	0	0	0	0	0	0	0	0	0	0	0
DIYALA	1486547	4	4	2	0	0	2	2	4	0	0	4
ERBIL	1482958	0	0	0	0	0	0	0	0	0	0	0
KERBALA	930509	7	6	0	0	0	0	7	6	0	0	6
KIRKUK	2864705	70	62	50	3	0	53	17	62	0	0	62
MISSAN	834977	0	0	0	0	0	0	0	0	0	0	0
MUTHANNA	583511	1	1	0	0	0	0	1	1	0	0	1
NAJAF	1206264	10	6	0	0	2	2	8	6	0	0	6
NINEWA	1027800	62	47	32	8	4	44	18	47	0	0	46
SALAHADIN	1254303	1	1	1	0	0	1	0	1	0	0	1
SULAYMANIA	1547072	4	4	3	0	0	3	1	4	0	0	4
THI-QAR	1640193	8	5	0	0	0	0	8	5	0	0	5
WASSIT	995296	3	2	0	0	1	1	2	2	0	0	2
Iraq	29,944,660	220	173	90	11	12	113	107	173	2	0	170

Cumulative measles/rubella case count and surveillance indicators up to week 10 ending 14 March 2010

Province	Total population	** Measles incidence	*** Measles reporting rate	Indicators target >80%				
				* of suspected tested for measles IgM	% of cases with complete investigation	% of specimens received at the NML within 7 days	% adequate specimens	% results reported to EPI within 7 days
ANBAR	1483280	0	0	0%	0%	0%	0%	0%
BABYLON	1625434	0	3.8	67%	50%	75%	100%	75%
BA-KARKH	2937300	0	1.1	100%	0%	100%	100%	100%
BA-RESAFA	3650383	1.4	2.7	63%	42%	73%	75%	73%
BASRAH	2426607	0.0	1.3	67%	50%	100%	100%	100%
DAHUK	942268	2.1	0.0	100%	0%	0%	100%	0%
DIWANIYA	1025253	0.0	0.0	0%	0%	0%	0%	0%
DIYALA	1486547	1.3	0.7	100%	50%	75%	100%	75%
ERBIL	1482958	0.0	0.0	0%	0%	0%	0%	0%
KERBALA	930509	0.0	3.9	86%	14%	100%	100%	100%
KIRKUK	2864705	18.5	3.1	93%	40%	76%	97%	76%
MISSAN	834977	0.0	0.0	0%	0%	0%	0%	0%
MUTHANNA	583511	0.0	0.9	100%	0%	100%	100%	100%
NAJAF	1206264	1.7	3.4	60%	0%	83%	80%	83%
NINEWA	1027800	42.8	9.1	87%	60%	87%	81%	87%
SALAHADIN	1254303	0.8	0.0	100%	100%	100%	100%	100%
SULAYMANIA	1547072	1.9	0.3	100%	25%	75%	100%	75%
THI-QAR	1640193	0.0	2.5	63%	13%	80%	100%	80%
WASSIT	995296	1.0	1.0	67%	67%	0%	67%	0%
Iraq	29944660	3.8	1.9	83%	42%	80%	90%	80%

** This figure represents lab confirmed + EPI linked + clinical measles. *** This figure represents non-measles suspect cases/100,000 population.

* excluding EPI linked.

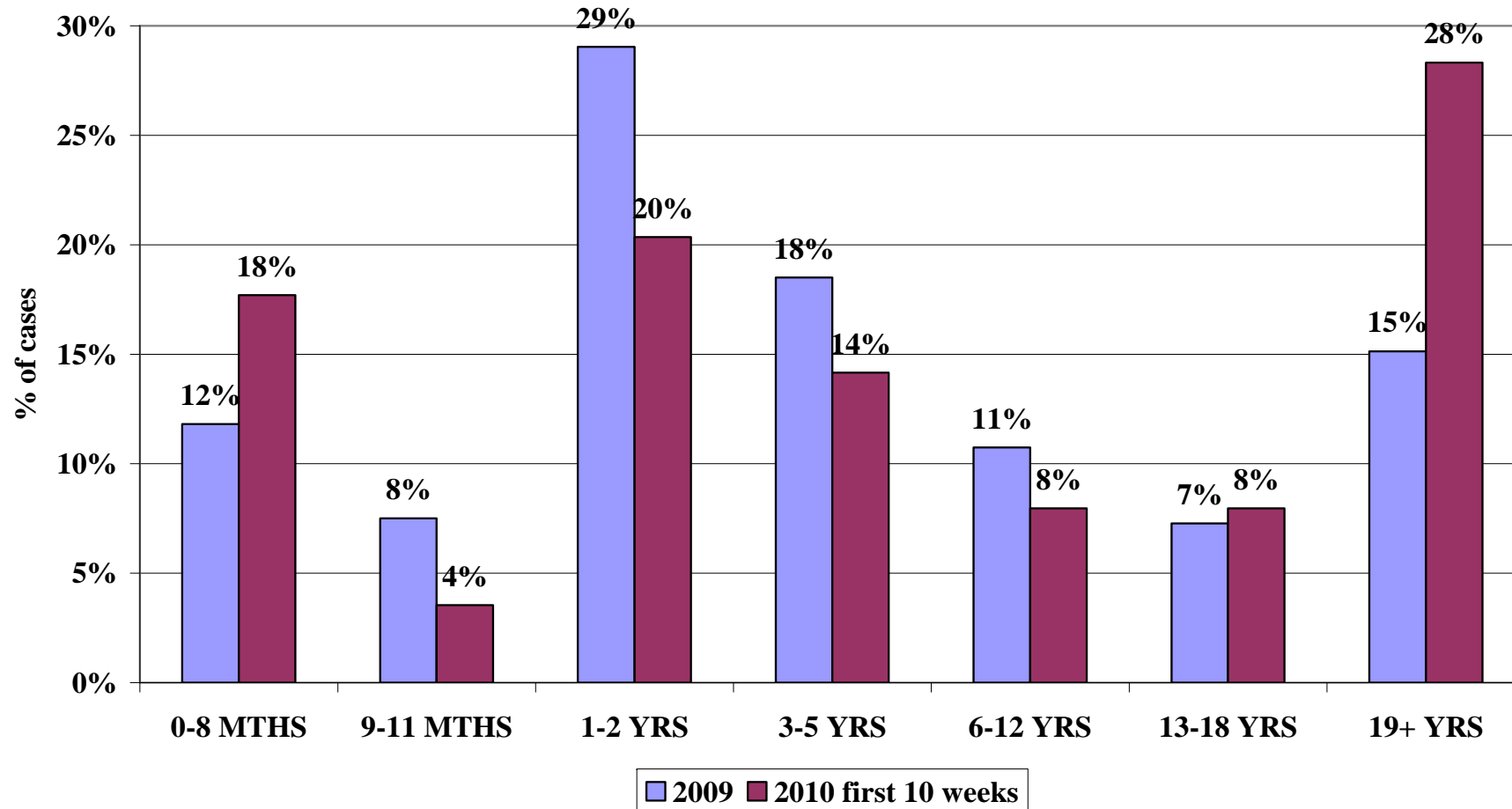
EMRO definition of complete investigation = DISTRICT + age + SEX + DRASH + VACCINFO (1 or 2) + DLM + MEASLES1 (1 or 2 or 3) if spec collected.

Gray Shading DoH failed to detect or report any suspect measles case in 10 weeks, this is a clear evidence of serious problems regarding cases detection, notification and reporting.

Red shading measles out break, there is a need for urgent steps to improve routine measles coverage. **Yellow Shading** Indicator not met.

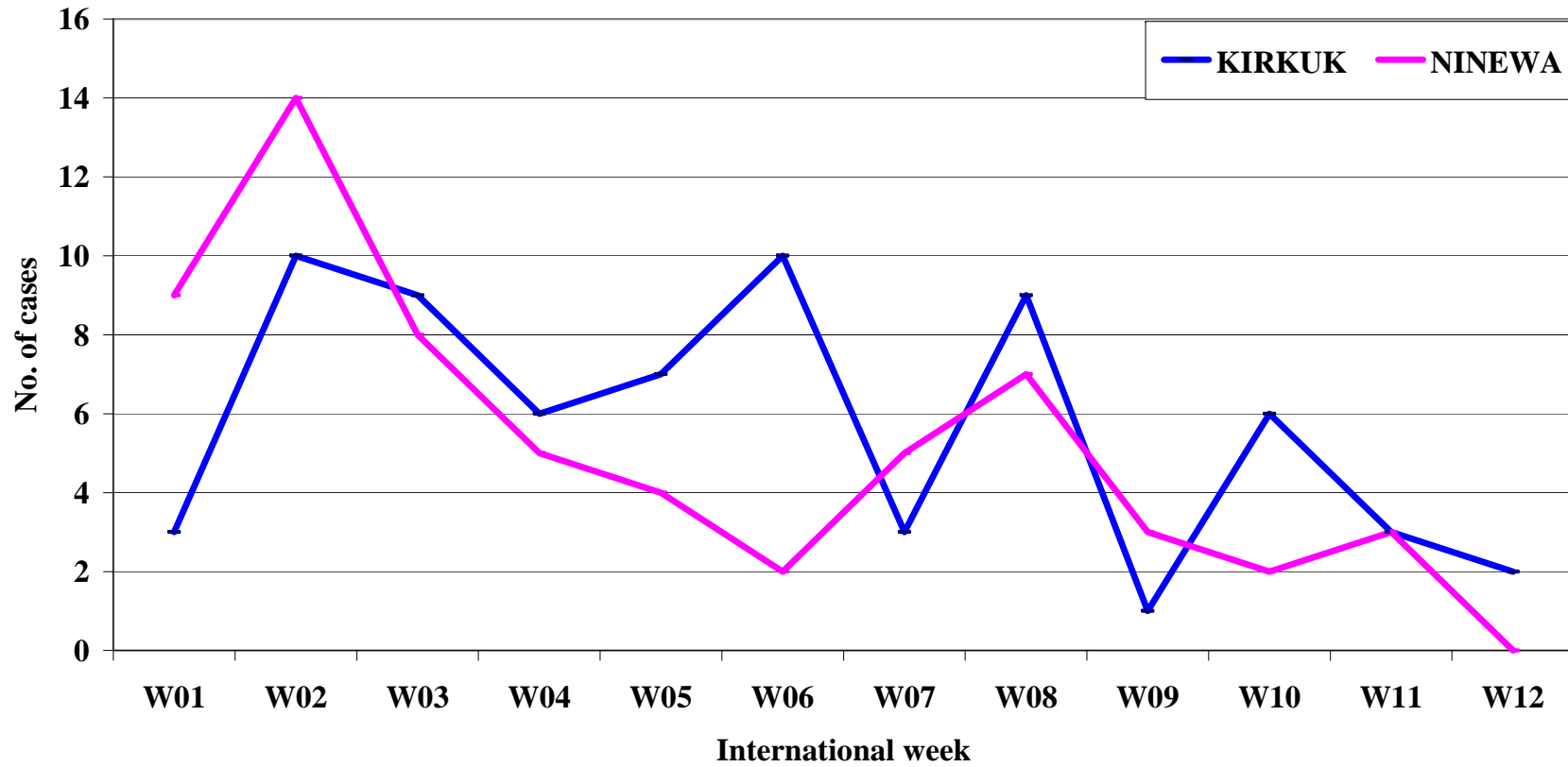
DIWANIYA, Erbil and Missan have clear week measles surveillance system

Confirmed measles by agegroup, 2009 and first 10 weeks of 2010



It is quite clear that around 20% of measles cases are still occurring among infants mostly below the age of vaccination, 34% of cases are occurring among 1-5 year old children which points to several weaknesses in routine and SIAs. 28% of measles cases in 2010 are among those above 19 year old young adults (clear shifting toward older age groups), more effort is needed to target university students, military recruits and those leaving school.

Reported measles cases by week, Ninewa and Kirkuk, first 12 weeks of 2010



Measles out breaks in Kirkuk and Ninewa seems to be going down, serious effort to stop the last chains of transmission is needed from the 2 DoHs, however, neighboring DoHs, such as Erbil, Duhok and Sulymania should be on the alert.